

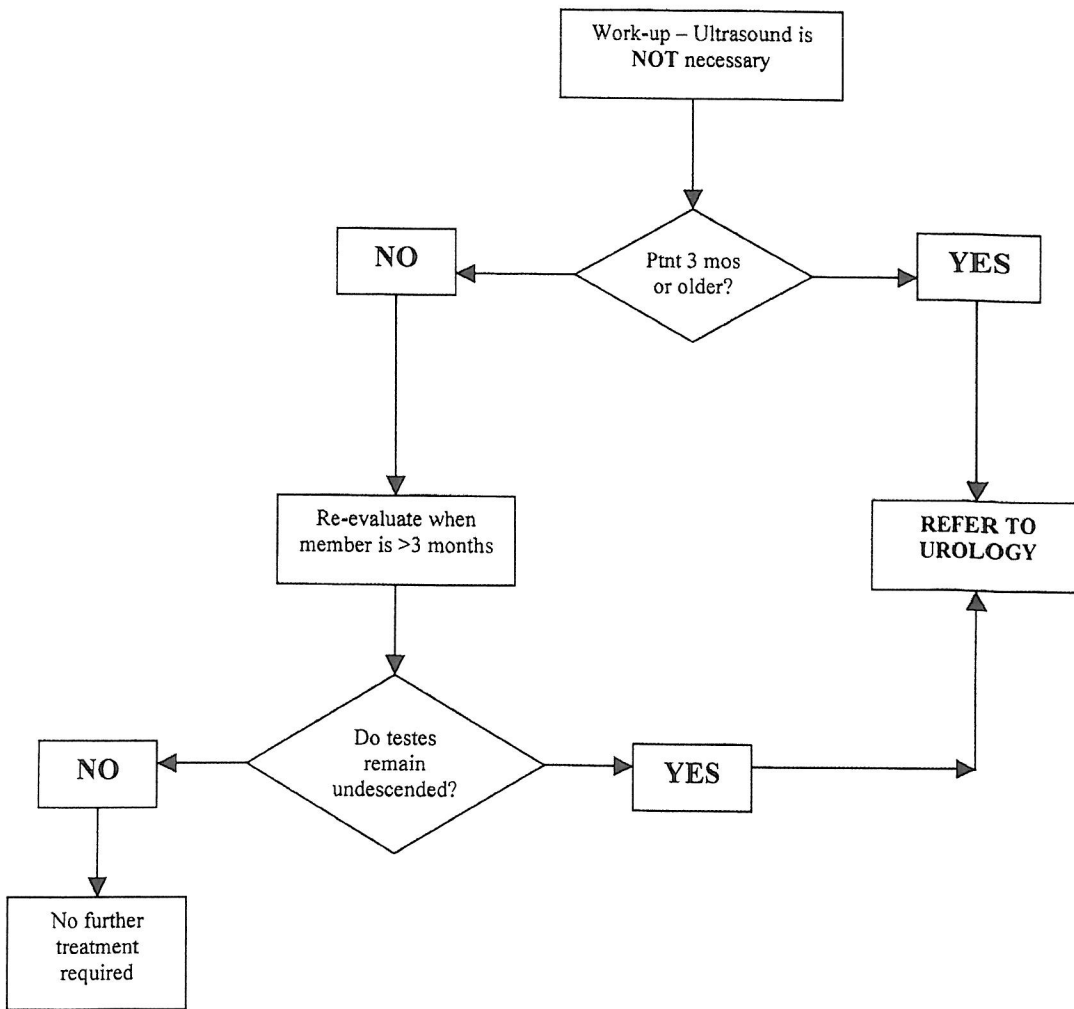
# **UNDESCENDED TESTES**

**Reviewed and approved, June 2012**

This protocol is a general guideline and does not represent the professional standard of care required of the health care provider.

This pathway should be modified as indicated, based on the health care provider's professional judgment, to meet the needs of individual patients.

## UNDESCENDED TESTES



### Undescended Testes

**Workup:**

- Ultrasound is NOT necessary

**When to refer to Urology**

- At age 3 months+ for either unilateral or bilateral undescended testes.