

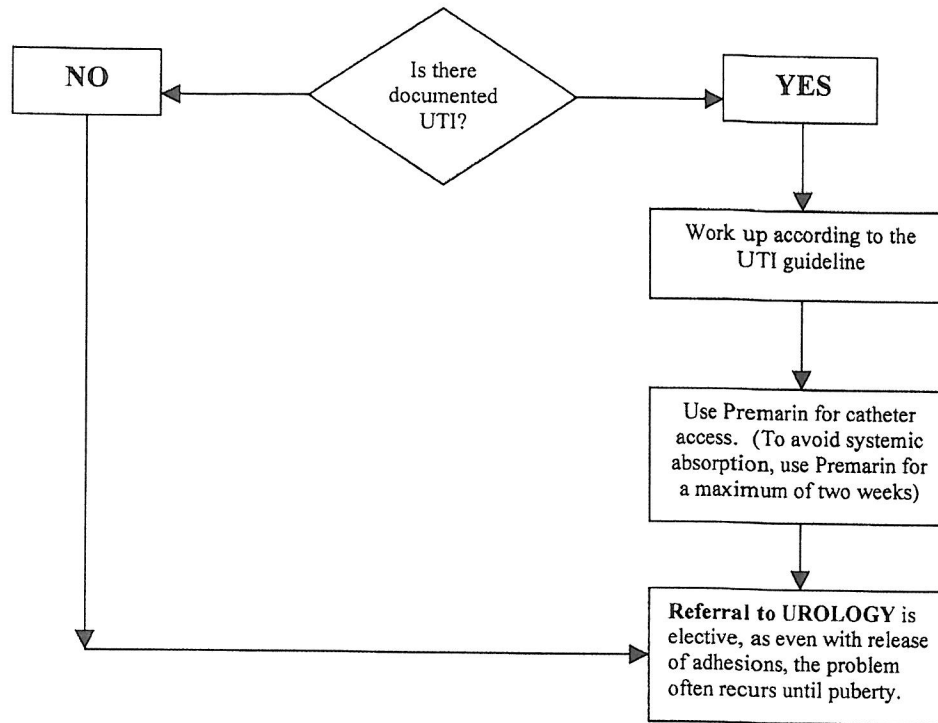
LABIAL ADHESION

Reviewed and approved, June 2012

This protocol is a general guideline and does not represent the professional standard of care required of the health care provider.

This pathway should be modified as indicated, based on the health care provider's professional judgment, to meet the needs of individual patients.

LABIAL ADHESION



Labial Adhesion

Workup:

- none unless there is a **DOCUMENTED** UTI.

Treatment:

- if there is a documented UTI, work up according to the UTI guideline. If catheter access is needed, use Premarin. If treating with Premarin, use for only two weeks to avoid systemic absorption.

Referral:

- elective, as even with release of adhesions, the problem often recurs until puberty.