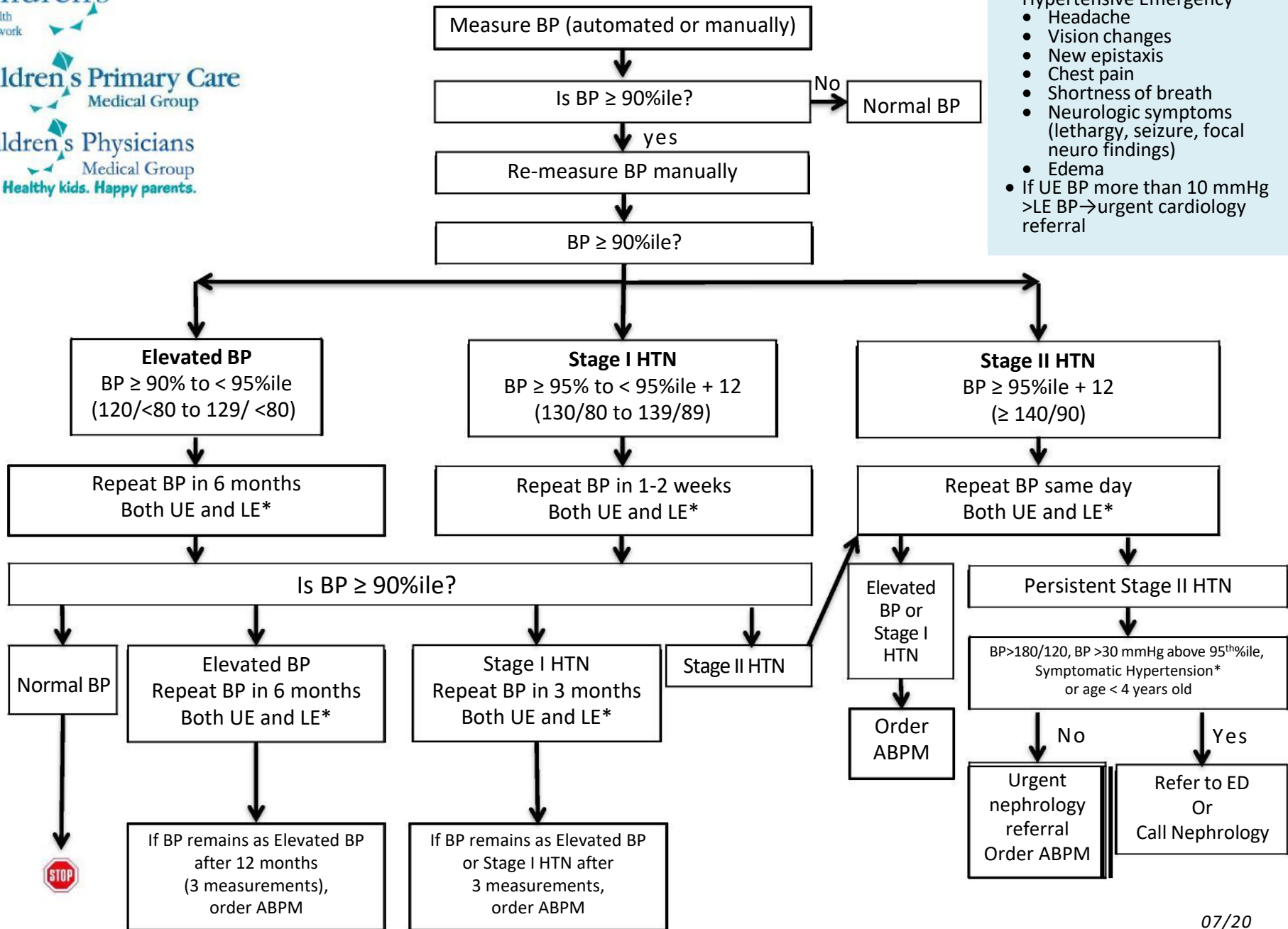


RCHN Elevated BP and Hypertension Guideline

Ambulatory Blood Pressure Monitor (ABPM) management algorithm on reverse

***Red Flags:**

- Symptoms/Signs of Hypertensive Emergency
 - Headache
 - Vision changes
 - New epistaxis
 - Chest pain
 - Shortness of breath
 - Neurologic symptoms (lethargy, seizure, focal neuro findings)
 - Edema
- If UE BP more than 10 mmHg >LE BP → urgent cardiology referral



RCHN Elevated BP and Hypertension Guideline

For children age 6 years and older:

Order ABPM associated with
Elevated blood pressure without a diagnosis of hypertension or white coat hypertension R 03.0

ABPM scheduled through Nephrology at Rady Main Campus (858-966-8052)

Refer to video for family education: <https://vimeo.com/383149431> ENGLISH <https://vimeo.com/383149628> SPANISH

If questions about results, please contact reading Nephrologist through EPIC or call office

