

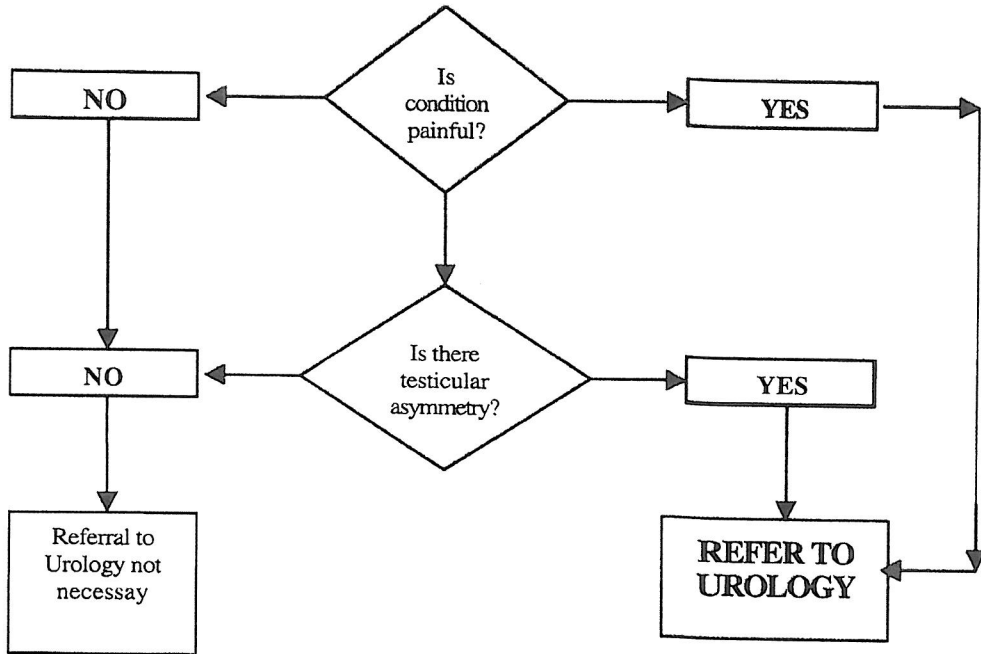
VARICOCELE

Reviewed and approved, June 2012

This protocol is a general guideline and does not represent the professional standard of care required of the health care provider.

This pathway should be modified as indicated, based on the health care provider's professional judgment, to meet the needs of individual patients.

VARICOCELE



Varicocele

Refer to Urology if painful, or if there is testicular asymmetry.